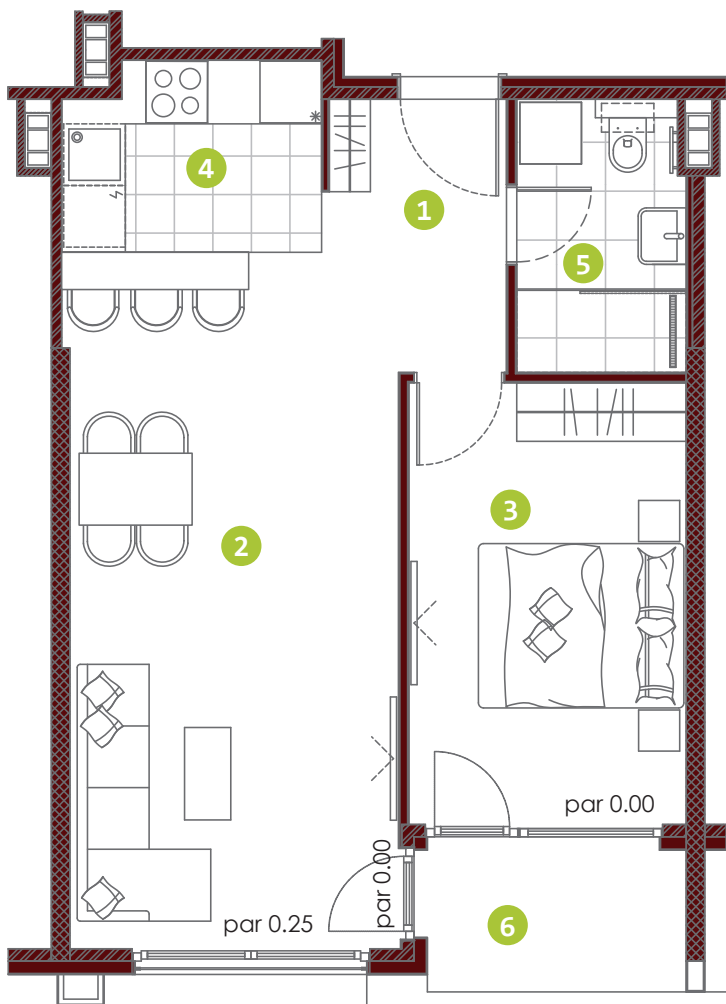


Položaj stana u objektu



Osnova stana



3D prikaz stana

DVOSOBAN STAN

br.	prostorije	P (m ²)
1	ULAZNI HOL	2,32
2	DNEVNA SOBA I TRPEZARIJA	23,62
3	SPAVAĆA SOBA	11,92
4	KUHINJA	4,51
5	KUPATILO	4,33
6	TERASA	3,88

Površina stana: 50,58 m²

L1 T5-2.0/1-7

st. 2, 4, 6, 8, 15, 22, 29